

# LANDA®

## Industrial Pressure Washers ...Built Right to Do the Job Right

# VHG

## Compact, Natural Gas-Heated Hot Water Pressure Washer

- Up to 4.8 GPM and 3000 PSI
- Rugged Belt-Driven Pump with 7-year Warranty
- Electronic Ignition
- LP Conversion Option
- Programmable Smart Control

■ Top-of-the-line **Tuff-Skin Hose**, with 24-inch hose guard for burst protection and swivel swedge fitting for twist-free operation, has seven times the abrasion resistance as other high-pressure hoses (hose reel is optional).

■ Many **Safety Features**, including a rupture disk and thermal pump protector to prevent the buildup of excessive pressures or heat.

■ High-efficiency burner has **Electronic Ignition** standard on all models, eliminating the hassle of having to constantly light the pilot flame.

■ **Hinged Side** allows for quick access to components without removing the cabinet.

■ Industrial-duty **Electric Motor** with multiple voltage options and thermal overload protection.

■ Extra-durable **Heating Coil** made of leak-free, cold-rolled, Schedule 80 steel pipe with five-year warranty.

■ Rugged **Steel Frame** painted with an epoxy powder-coat finish for all-weather protection (also available in stainless steel option).

■ Helpful **Tri-Lingual Labels** with operating instructions in English, Spanish and French for owner and operator protection.

■ Our patented **Cool-Bypass\*** system keeps pump water temperature low while in bypass mode.

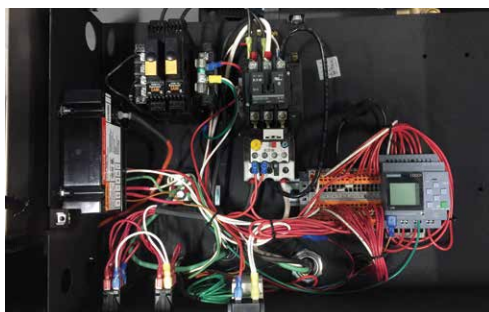
■ Overload protected **Control Switches** are conveniently located for ease of operation.

■ Brass, anti-syphon **Detergent Metering Valve** locks out air and dispenses precise amount of cleaning agent.

■ Industrial-grade, dual belt-driven **High-Pressure Pump** has a tri-plex, forged brass head with a 7-year limited warranty and U-seals for greater pump protection.

■ Three quick-couple **Nozzles**, made of hardened stainless steel, are mounted for ready access.

■ Insulated, fatigue-free **Trigger Gun** with chrome-plated, dual-lance **Variable Pressure Wand** make for easy cleaning and adjusting the pressure while washing.



**PROGRAMMABLE SMART CONTROL** now standard for all VHG machines allows auto start/stop and time delay shutdown features without changing any hardware. It also provides complete control of the equipment run time.

■ Rust-free, stainless steel **Float Tank** with stainless steel inlet filter and low-turbulence float valve allows for high-pressure application of detergent.

■ Cast-iron, bushed-bore **Pulleys** with two-bolt adjustment means long life and easy maintenance on the high-pressure pump.

■ **Consolidated Plumbing** has put both the water supply inlet and quick-couple, high-pressure outlet next to each other for ease of installation.



■ **Wireless Remote** (optional) allows users to work up to 300' away.

[www.landa.com](http://www.landa.com)

## WHY CHOOSE THE VHG?

Compact but heavy duty, this natural gas model's footprint is a mere 24" x 53" for the smallest unit, making it an ideal choice for congested work areas or wash bays where space is at a premium. The small size makes it no less efficient; with cleaning power up to 3000 PSI and 4.8 GPM, this machine delivers enough cleaning action to tackle a variety of challenges, and includes an optional wireless remote control. The VHG is especially adept at cleaning and maintaining the appearance of the dirtiest fleet or construction equipment.



VHG4-30024 Shown with optional Stainless Steel Coil Wrap and 4-Panel Skirt & Cover

Model #	Part #	GPM	PSI	Pump RPM	Pump	Motor HP	Volts	Phase	Amps	Approx BTUs	Ship Wt (lbs)
VHG4-20024A	1.109-534.0	3.5	2000	1175	LM4035R.3	5.0	230	1	25	364,000	750
VHG4-22024A	1.109-535.0	4.0	2200	835	LT6036R.2	6.2	230	1	27	364,000	790
VHG4-22024B	1.109-536.0	4.0	2200	835	LT6036R.2	6.2	230	3	15	364,000	770
VHG4-22024C	1.109-537.0	4.0	2200	835	LT6036R.2	6.2	460	3	8	364,000	780
VHG4-22024G	1.109-538.0	4.0	2200	835	LT6036R.2	6.2	208	1	29	364,000	790
VHG4-22024H	1.109-539.0	4.0	2200	835	LT6036R.2	6.2	208	3	18	364,000	780
VHG4-30024A	1.109-541.0	3.9	3000	775	LT6036R.2	8.2	230	1	36	354,000	868
VHG4-30024B	1.109-542.0	3.9	3000	775	LT6036R.2	8.2	230	3	25	354,000	815
VHG4-30024C	1.109-543.0	3.9	3000	775	LT6036R.2	8.2	460	3	15	354,000	815
VHG4-30024G	1.109-544.0	3.9	3000	775	LT6036R.2	8.2	208	1	38	354,000	815
VHG4-30024H	1.109-545.0	3.9	3000	775	LT6036R.2	8.2	208	3	27	354,000	815
VHG5-30024B	1.109-546.0	4.8	3000	1035	LT6036R.2	10.0	230	3	29	480,000	780
VHG5-30024C	1.109-547.0	4.8	3000	1035	LT6036R.2	10.0	460	3	14	480,000	835
VHG5-30024H	1.109-548.0	4.8	3000	1035	LT6036R.2	10.0	208	3	30	480,000	780

Dimensions: 53"L x 24"W x 49"H

### Field Installed Options & Accessories

#### Available for All Models

- 8.924-815.0 Wired Remote Operator Station Kit (use for as primary or secondary remote)
- 8.924-816.0 Electronic Detergent Kit (compatible with wired or wireless remotes)
- 8.924-814.0 Wireless 6 Channel Remote Kit (one remote)\*
- 8.925-072.0 Wireless 6 Channel Remote Kit (two remotes)\*
- 8.924-878.0 Wall Mount Remote Bracket Kit
- 9.802-633.0 LP Gas Regulator Assembly

◆ Factory Installed \* Special Ordering Process, 90-Day Lead Time

#### Options For Older VHG Units Only [Pre Smart Control]

- 8.941-545.0 Additional LanCom Remote
- 8.930-131.0 Wall Mount Bracket for Fixed LC Remote

#### Available for Models Up to 5 GPM

- 8.903-543.0 Wheeled Cart for VHG Propane Model
- 9.801-040.0 Draft Diverter, 10"
- 9.801-019.0 LP Conversion Kit ◆
- 8.903-541.0 SS Coil Wrap, 4-Panel Skirt & Cover ◆
- 8.903-542.0 Small Stainless Steel Coil Wrap ◆

Distributed by:

## DETERGENT FOR EVERY JOB

Landa's innovative detergent lineup makes your cleaning job easier and faster. Phosphate-free to meet the most stringent environmental demands without sacrificing cleaning effectiveness. We'll match you with a product designed for your specific application.



\*Patent US 8,496,188 B2